

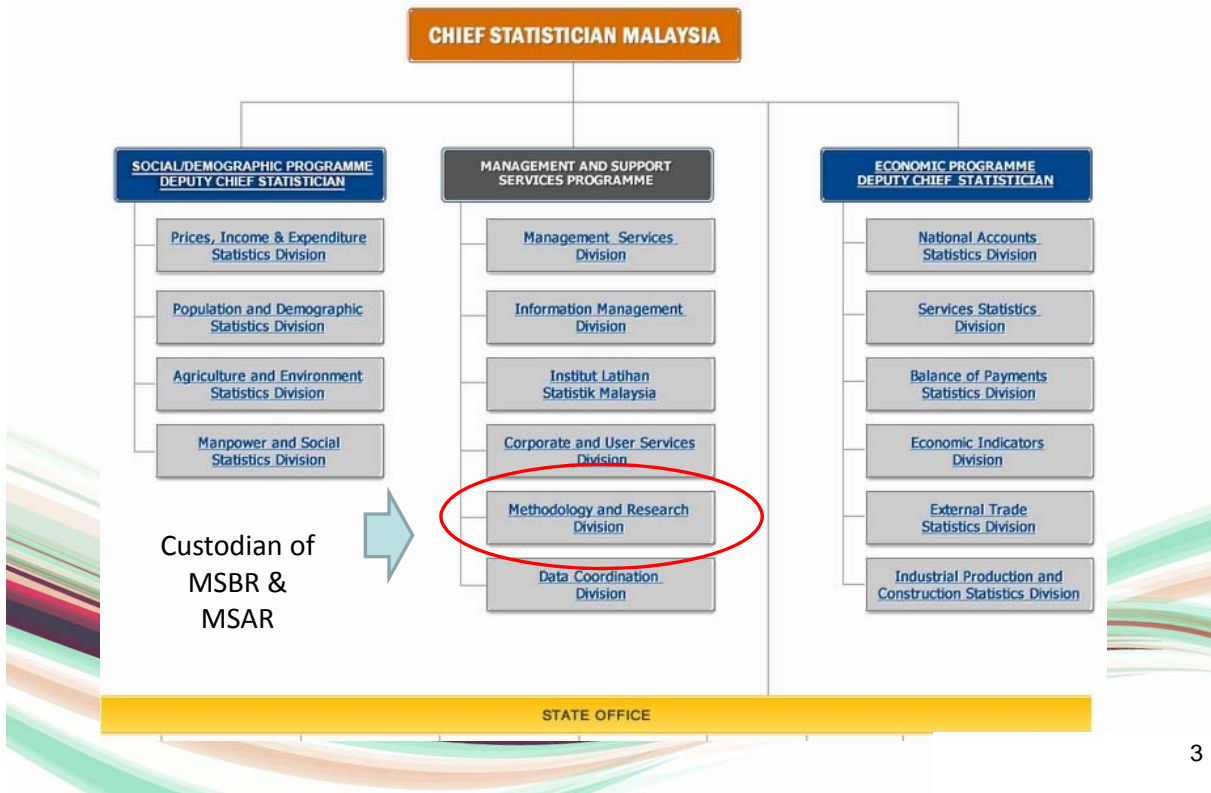


**Regional Workshop on
Improving Use of Administrative Data in Production of Official Statistics:
Role of Statistical Register Systems**

**COUNTRY PRESENTATION:
MALAYSIA**

**INTERGRATION OF BASE
REGISTERS IN A STATISTICAL
REGISTER SYSTEM**

ORGANISATION CHART OF DOSM



INTEGRATING BASE REGISTERS

- Currently, MSBR is under the NEWSS platform which integrated proposed solution called as Integrated Statistical Systems Framework (ISSF). It provides the main business functionalities of DOSM on pre-collection, collection, processing, analysis and dissemination.
- MSAR will also be developed under the NEWSS platform

National Enterprise-Wide Statistical System (NEWSS)

- A system which integrates different system applications and all statistical workflow processes including designing, processing, collecting, analysing, interpreting and disseminating activities in the GSBPM

Integrated Statistical Systems Framework (ISSF)

- ISSF was developed to ensure applications produce quality statistics using standard mechanism that would increase efficiency and shorten the process of developing the census/surveys on the same platform.

Information Support System (ISS)

- ISS is the supporting modules that directly support the services/functions required by ISSF modules or indirectly provide contents, management and operational capabilities to perform the work in a more efficient manner and improve the management processes.

5

National Enterprise Wide Statistical System NEWSS

Noor Azwa binti Anwar
Khamis, 15 Januari 2015

Log Keluar

ISSF Business Intelligence GIS Pengurusan Dokumen KMS

Selamat Datang ke Sistem NEWSS

Direktori Saya

Tugasan	0 sehingga login terakhir 0 belum dilaksanakan
Tugasan Kumpulan	143 sehingga login terakhir 143 belum dilaksanakan
Kandungan	13 sehingga login terakhir

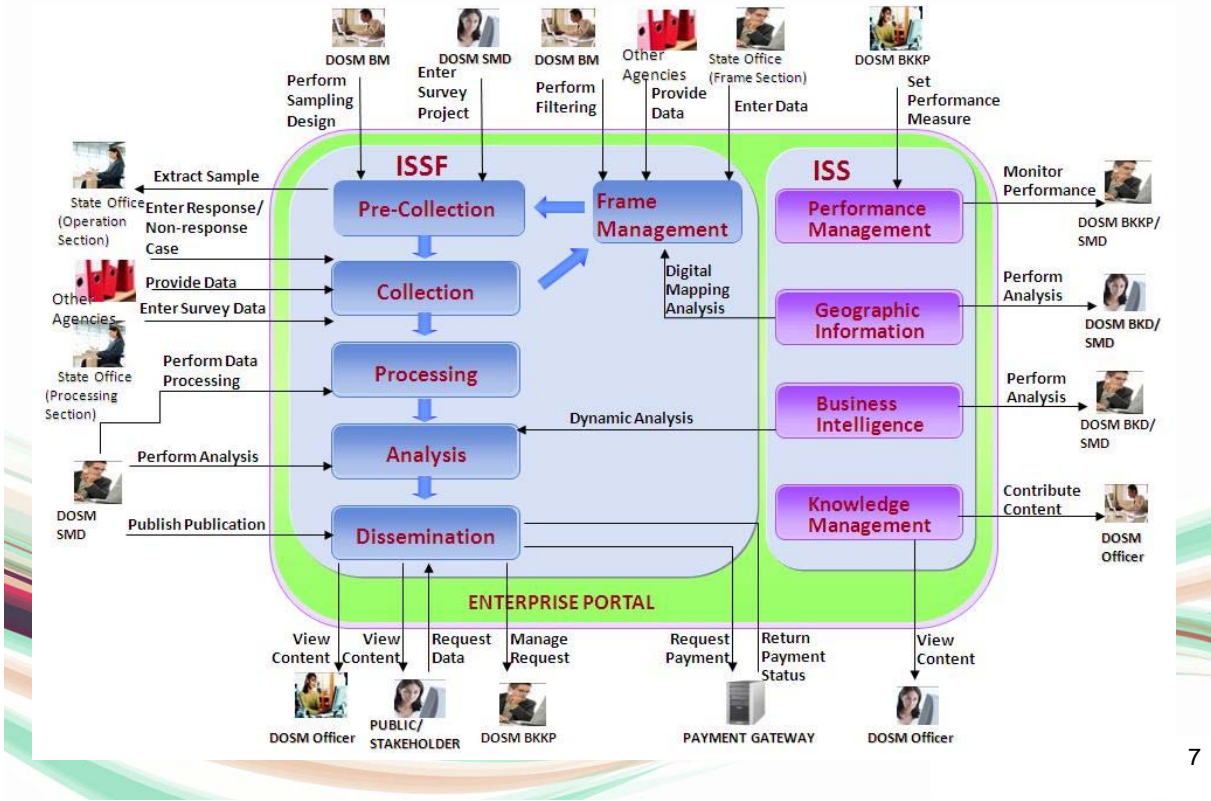
Penyiasatan Untuk Tahun Terkini

Lewat	0
Dalam Proses	5
Selesai	0
Telah Dirancang	2
Jumlah	7

- 1. Pra-Pengumpulan Data**
Menganalisis saiz dan sampel, saiz dan persekitaran sampel serta penyediaan parameter dengan menggunakan algoritma pemilihan sampel.
- 2. Pengumpulan Data**
Mendapatkan kerja pungenan data.
- 3. Prosesan Data**
Menjelaskan tanggapan data secara dalam atau luar talian serta membuat maklumat terdahulu dari agensi yang lain untuk merangka data.
- 4. Analisis & Laporan**
Pencapaian dan merangka analisis keadaan, keputusan yang diperoleh dengan menggunakan beberapa laporan dan perantaraan menganalisis serta peta.
- 5. Penyebaran**
Membuat perantaraan dan memaparkan maklumat untuk tujuan penyebaran dengan membuat laporan dengan peta.

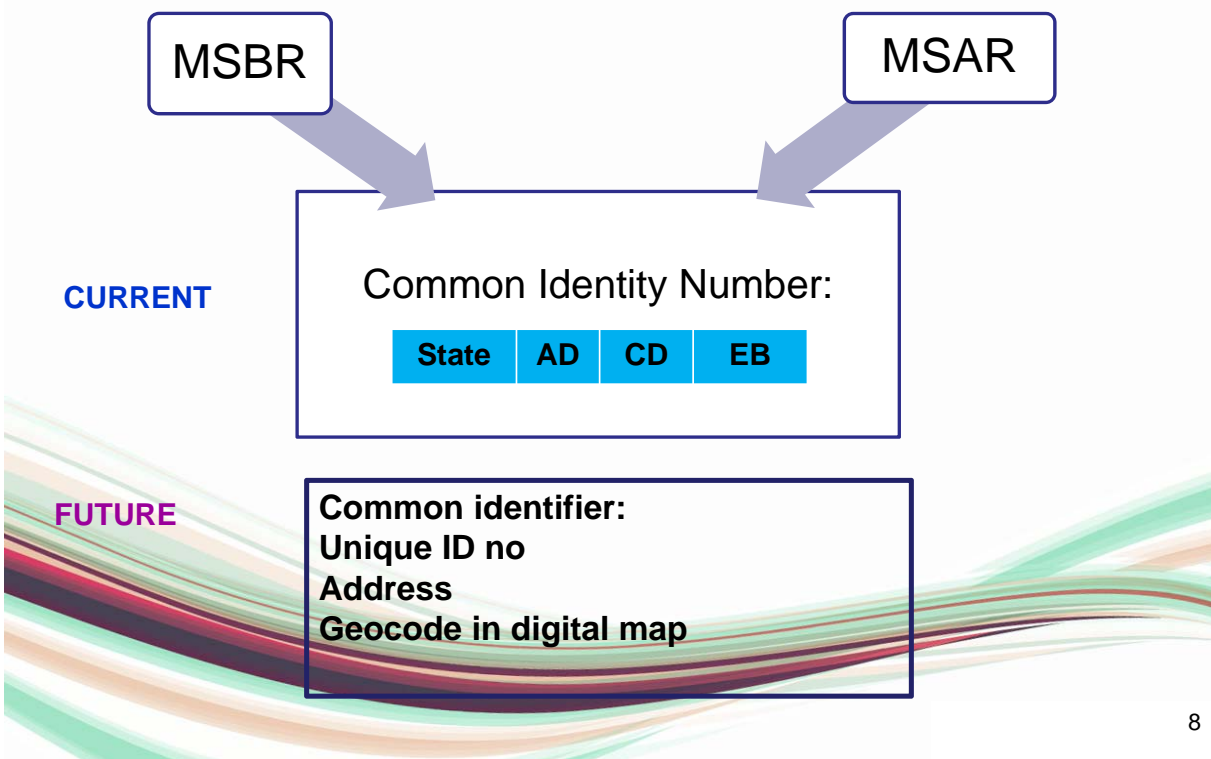
6

NEWSS Environment



7

INTERLINKING BASE REGISTER



8

