

*Regional Course on Statistics on Informality: Informal  
economy, work and employment*

**Operationalizing the international statistical  
definition of Informal employment in statistical  
data collection: Mongolia**

Presented by: D. Oyunchimeg  
Director of the Population and Social  
Statistics Department

*6-10 July, 2014, Chiba, Japan*

# Content

1. International standards of informal employment
2. Informal (sector) employment in Mongolia
3. Challenges

# 1. International statistical standards

- Resolution concerning statistics of employment in the informal sector (15<sup>th</sup> ICLS, 1993)
- Guidelines concerning a statistical definition of informal employment (17<sup>th</sup> ICLS, 2003)
- A statistical manual on the informal sector and informal employment (ILO, 2013)

# 1. International statistical standards

- Resolution concerning statistics of employment in the informal sector (15<sup>th</sup> ICLS, 1993)
  - Definition: Persons who, in a reference period, were employed in at least one informal sector enterprise, regardless of status in employment and whether it was their main or second job

Enterprise based definition:  
Informal employment in  
informal sector

# 1. International statistical standards

- Guidelines concerning a statistical definition of informal employment (17<sup>th</sup> ICLS, 2003)
  - Definition: Total number of informal jobs, whether carried out in formal sector enterprises, informal sector enterprises or households, during a given reference period

Job based definition: Informal employment in informal sector+informal employer in formal sector

## 2. Informal (sector) employment in Mongolia

- 2006, Mongolian Parliament Resolution №1 "Adoption of the government policy on informal employment"
- Informal employment survey was module of Labour force survey of Mongolia and conducted by 2007.II -2008.II quarter.
- Methodology: Resolution concerning statistics of employment in the informal sector (15th ICLS)



## 2. Informal (sector) employment in Mongolia

### Concept and definition of employed in informal sector

**Employed in informal sector** is a citizen employed in non-agricultural activities and services not prohibited by law, which is not covered by formal registration, nor by social security, and not incorporated into legal entity.

- **Citizen not fully covered by official employment registration** is a citizen who is not covered by employment statistics, nor administrative registration, or tax registration for employed in informal sector.
- **Not fully covered by social welfare** are citizen who are not subject of pensions, benefits, health insurance, unemployment insurance or insurance against workplace accidents, professional diseases as stipulated by Law of Mongolia on Social Insurance.
- **Non-agricultural activities and services** comprise all activities and services besides agricultural farming, forestry, animal husbandry, insect breeding practices, primary processing, storage, production and transportation of agricultural products, use and repair of agricultural machinery.
- **Not incorporated into business entity** means a household production and service unit solely owned by one or a few members of family, or by one or jointly by a few households, some of products and services sold (or barter exchanged) to market, but not incorporated into a business entity, cooperative, community union or a company by law.



МОНГОЛЫН  
ҮНДЭСНИЙ  
СТАТИСТИКА

## 2. Informal (sector) employment in Mongolia

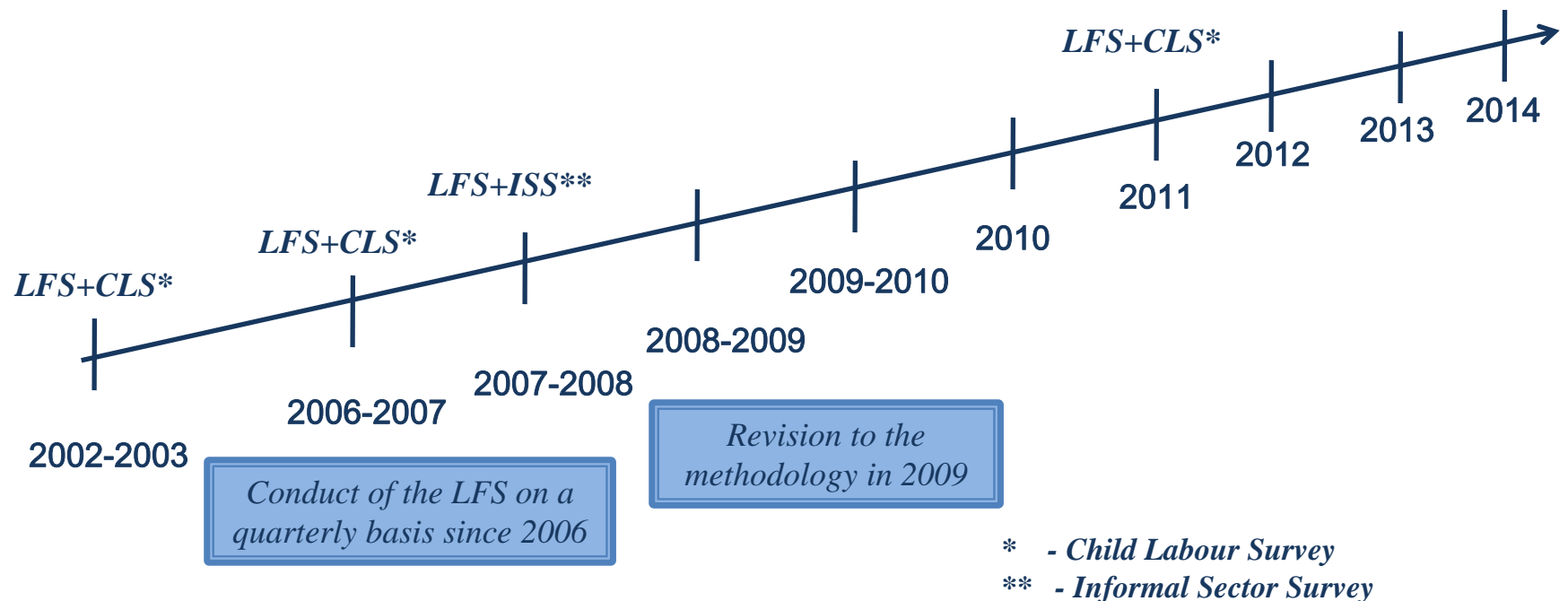
- Data source is household based sample survey (Labour force survey) for information for statistics on the informal sector and on informal employment



## 2. Informal (sector) employment in Mongolia

### Short history of Labour Force Survey

The Labour Force Survey (LFS) was conducted for the first time in Mongolia on a quarterly bases with the financial support of the International Labour Organization in 2002 and 2003.





УНДЭСНИЙ СТАТИСТИКА

## 2. Informal (sector) employment in Mongolia

### Questionnaire of LFS

Labour Force survey questionnaire was designed consisting of 142 questions in 8 chapters:

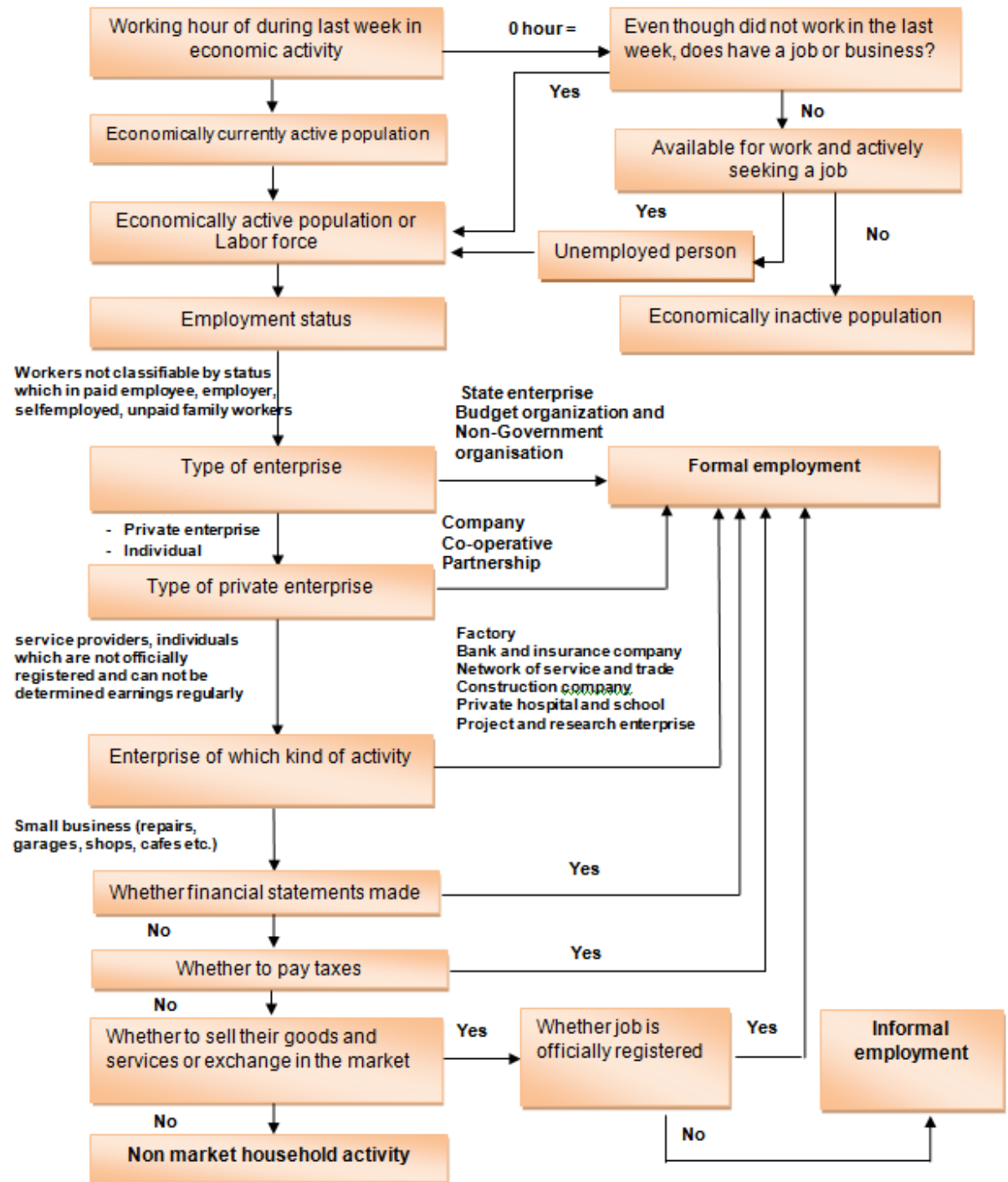
- Household roster - 15 questions
- Education & training - 7 questions
- Current activities - 63 question
- Availability for more work - 4 questions
- Unemployment - 10 questions
- Usually activities - 20 questions
- Past employment record - 9 questions
- Current activities without pay - 14 questions

Employment in  
informal sector -25  
questions



انجمن پژوهش‌های اقتصادی  
National Bureau of Economic Research

## Scheme for determining the informal sector employment



## 2. Informal (sector) employment in Mongolia

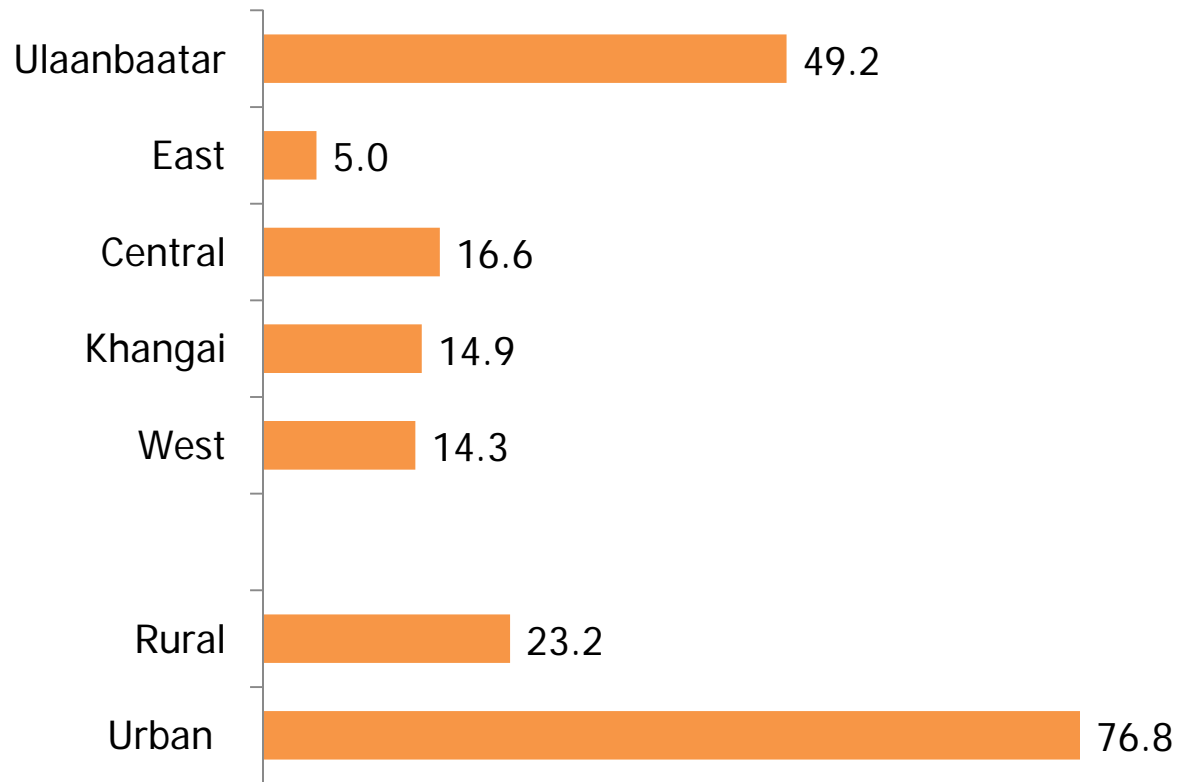
### EMPLOYMENT IN INFORMAL SECTOR, by sex and location and region

Employee	Which in: Region								
	Location			Region					
	Urban	Rural		West	Khangai	Central	East	Ulaanbaatar	
<b>Total</b>	<b>196 242</b>	<b>150 651</b>	<b>45 591</b>	<b>28 037</b>	<b>29 347</b>	<b>32 576</b>	<b>9 750</b>	<b>96 532</b>	
Total	Primary	188 723	147 308	41 415	25 236	27 873	31 409	9 029	95 176
	Secondary	7 519	3 343	4 176	2 801	1 474	1 167	721	1 356
Male	Total	115 895	89 132	26 763	16 879	16 932	17 963	6 096	58 025
	Primary	111 153	87 063	24 090	15 255	15 995	16 939	5 683	57 281
	Secondary	4 742	2 069	2 673	1 624	937	1 024	413	744
Female	Total	80 347	61 519	18 828	11 158	12 415	14 613	3 654	38 507
	Primary	77 570	60 245	17 325	9 981	11 878	14 470	3 346	37 895
	Secondary	2 777	1 274	1 503	1 177	537	143	308	612

Source: Labor Force Survey 2014, NSOM

## 2. Informal (sector) employment in Mongolia

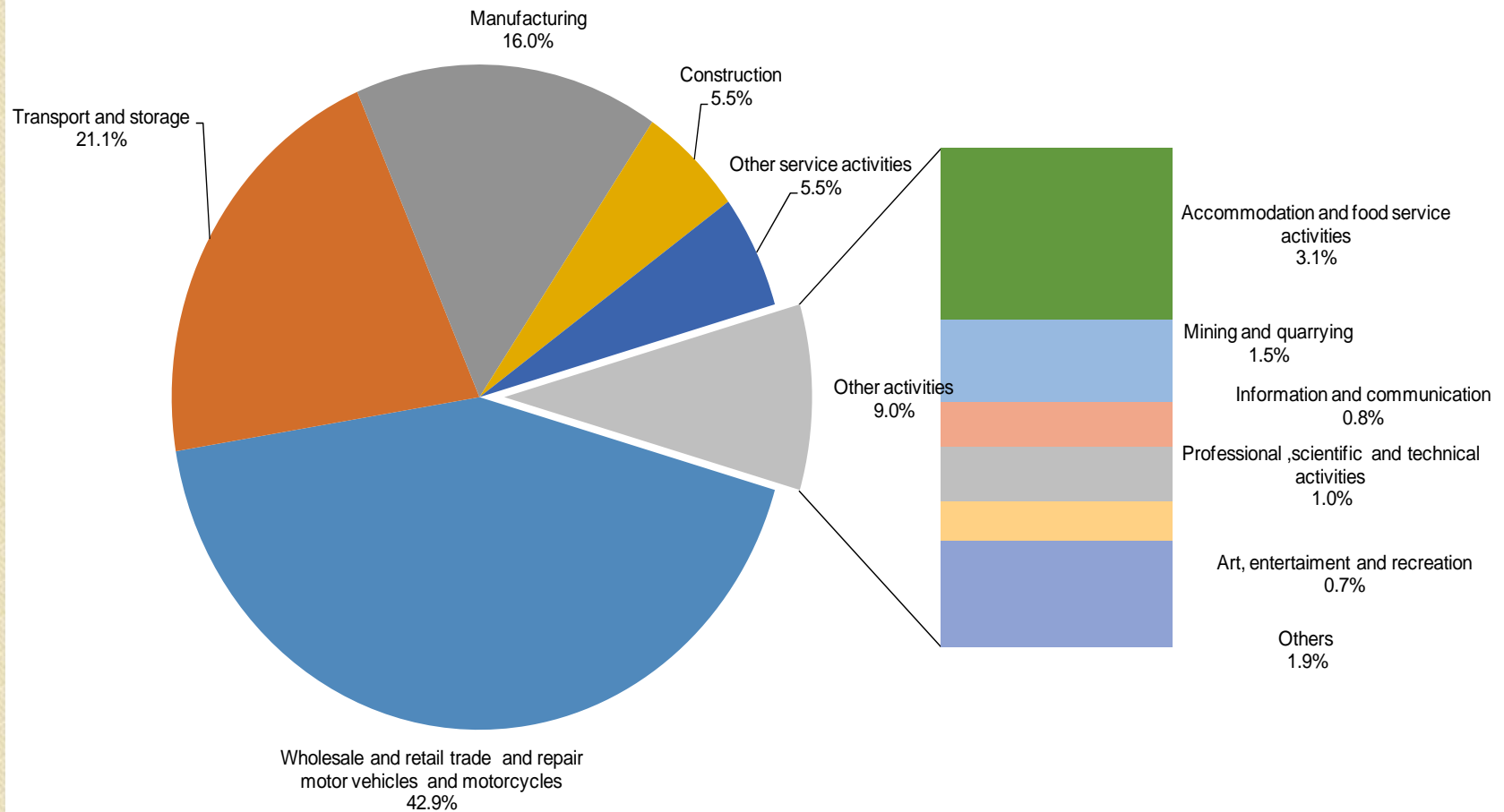
EMPLOYMENT IN INFORMAL SECTOR, by location and region, (%)



Source: Labor Force Survey 2014, NSOM

## 2. Informal (sector) employment in Mongolia

### EMPLOYMENT IN INFORMAL SECTOR, by ISIC, (%)



Source: Labor Force Survey 2014, NSOM



### 3. Challenges

- Planning for the development of the new LFS questionnaire and its methodology based on new standards of the 19th ICLS Resolution concerning statistics of work, employment and labour underutilization;
- Developing a new sampling design of the LFS, in line with international guidelines and best practices



УНДЭСНИЙ СТАТИСТИКА

# THANK YOU FOR YOUR ATTENTION

**For more information visit  
[www.nso.mn](http://www.nso.mn)**

The Government Building III  
Baga Toiruu-44  
Ulaanbaatar-20a, Mongolia  
Tel: (976)-11-329125  
Fax: (976)-11-324518  
E-mail: [international@nso.mn](mailto:international@nso.mn)  
Website: [www.nso.mn](http://www.nso.mn), [www.1212.mn](http://www.1212.mn)