



Presentation for 7th Workshop on Forgoing Partnerships for Statistical Training in Asia and the Pacific

Presentation by

Reshma Jesmin

Deputy Director

&

Focal Point Officer

Gender Statistics Cell

Bangladesh Bureau of Statistics

1



Outline



- Country Profile
- National Statistical Organization
- Gender Statistics Cell
- BBS & UNWomen Partnership
- Training on Gender Statistics for BBS and SID
- Trainings on Gender Statistics for Relevant Ministries
- Trainings on Gender Statistics for Institutionalization
- Trainings on Gender Statistics from Development Partners

2



Map of Bangladesh



Father of Nation





Country Profile.....



01) The people's Republic of Bangladesh is an independent, Unitary and sovereign country.

- It emerged as an independent country on March 1971.
- The war of liberation ended on 16 the December 1971.

02) Geographical location is $20^{\circ} 34'$ to $26^{\circ} 38'$ – north latitude and $88^{\circ} 01'$ to $92^{\circ} 41'$ – east longitude.

03) It is a Delta country.

04) It is bounded by India, Myanmar and Bay of Bengal.

5



Country Profile.....



05) Principal Rivers are the Padma, the Meghna, the Jamuna, the Brahmaputra, the Teesta, the Surma and the Karnaphuli

06) Temperature:

In winter Season: Minimum 11° C Maximum 29° C

In Summer Season: Minimum 21° C Maximum 34° C

07) Average rainfall in the Monsoon ranges from 1194 mm to 3454 mm.

6



Country Profile.....



- 08) Dhaka is the capital of Bangladesh.
- 09) Bangla (Bengali) is the state language of Bangladesh
- 10) State currency is Taka divided into 100 paisas (1 US \$=84 Taka).
- 11) The citizens of Bangladesh are known as Bangladeshi.
- 12) Main natural resource: Natural Gas
- 13) Main export item: Ready made Garments (holds about 70% share of the total export earnings)

7



Country Profile.....



- ❑ Population: **162.70** Million (2017),
- ❑ Population density: **1103**/km² (2017)
- ❑ Geographical location and Area: **147** Thousand sq. km
- ❑ Multiplicity of rivers: **405** rivers, **57** trans-boundary river (BWDB)
- ❑ Deltaic landscape: **80%** floodplain
- ❑ Population in Disaster Prone Area: **12.64 %** (ICCHL, 2015)
- ❑ Population in Urban Area: **23.43 %** (2011 P. Census)
- ❑ Average Life Expectancy: **72.0** (Male-70.6, Female-73.5) (2017)
- ❑ Per Capita Income: **USD\$ 1677** (2017-18)
- ❑ GDP Growth Rate: **7.65 %** (2017-18)
- ❑ Annual Inflation Rate: **5.78 %** (2017-18)
- ❑ Poverty rate: (Upper **23.2 %** and extreme **12.9 %** April-June 2016)

8



National Statistical Organization (NSO)



**BANGLADESH BUREAU OF STATISTICS (BBS)
HEAD OFFICE**



National Statistical Organization (NSO)....



- ❖ The Statistical System of Bangladesh is Centralized in the Bangladesh Bureau of statistics (BBS).
- ❖ Statistical Act, 2013
- ❖ National Strategy for the Development of Statistics (NSDS)



National Statistical Organization (NSO)....



- ❖ Bangladesh Bureau of Statistics (BBS) was established in August 1974
- ❖ It is headed by a Director General (DG).
- ❖ The Director General is the Chief Executive of BBS. He is responsible for collecting, processing and disseminating official statistics.
- ❖ The broad functions of BBS are to collect, compile, analysis and publish statistics on all sectors of the economy to meet the needs of development planning, research, policy and decision-making.
- ❖ BBS is in charge of conducting the population census, Agriculture census and Economic census. Apart from, national level surveys in the field of labor force, demographic situation, National accounts, CPI, agriculture, household income & expenditure, etc. are conducted.



National Statistical Organization (NSO)....



GOB

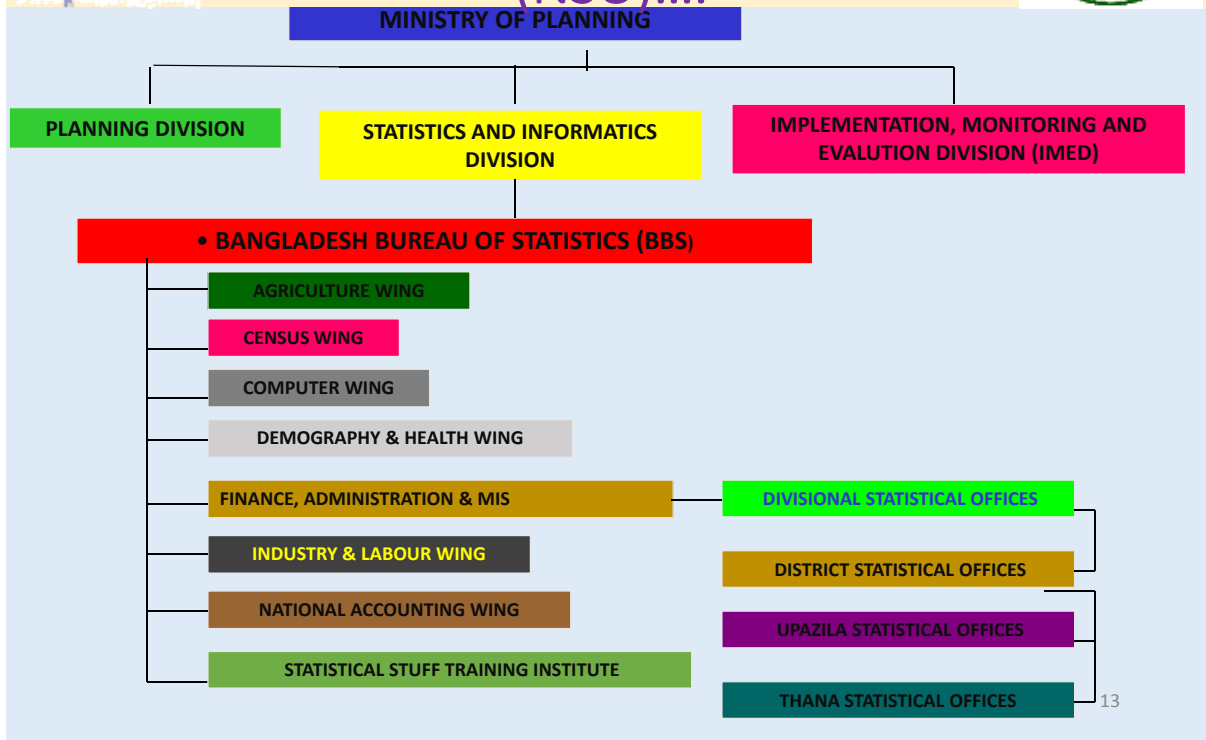
Ministry of Planning

Statistics & Informatics Division (SID)

Bangladesh Bureau of Statistics(BBS)



National Statistical Organization (NSO)....



13



Gender Statistics Cell



- Approved on 11 January 2017
- Established on 07 February 2017
- Composition of Cell:
 - Convener (1)
 - Focal Point Officer (1)
 - Members (5)

14



BBS & UNWomen Partnership



“Making Every Women and Girls Count”

Goal of the program: *Gender statistics in Bangladesh are available, accessible, analysed and used to inform policy-making and advocacy and promote accountability for delivering gender equality and women’s empowerment.*

15



Cont....



- The vast programme has 3 key components:
 - Help to enabling policy environment;
 - Data production; and
 - Develop a mechanism of user producer dialogue.

16



Trainings on Gender Statistics for BBS and SID



- 3-4 training for SID and BBS officials on Gender Statistics to develop their capacity on SDGs related indicators.
- 2 training for BBS officials on production of gender-specific Tier I, Tier II and Tier III indicators from high quality data sources

17



Cont...



- To design methodology for upcoming Violence Against Women Survey/ Gender based violence survey
- Training/orientation for BBS's field officials for Violence Against Women Survey
- Training to design methodology for Time Use Survey
- Training/orientation for BBS's field level officials for Time Use Survey
- Training for BBS and SID officials on tools and techniques on big data

18



Trainings on Gender Statistics for Relevant Ministries



- Training support to BBS staff and other relevant ministries on determining feasibility of the use of big data/tools/techniques for compiling gender-specific SDGs indicators.
- Training to MoWCA and other relevant ministries to develop user-friendly database and to compile statistics for gender from administrative data

19



Trainings on Gender Statistics for Institutionalization



- Institutionalize training on the use of gender statistics in Government training institution
- Conduct ToT/training Courses (will be determined when the MEWGC programme document will be finalized.

20



Trainings on Gender Statistics from Development Partners



- International training program in gender statistics by Statistics Sweden

21



Thank You

22